

# Recommended Accommodation for the ASAA Championships

Hi there ASAA Championship entrant. Lets make this event an event to remember. In conjunction with the Guys from Dubbo MAC I have done some research and here are the recommendations for accommodation while in Dubbo. Please book early to avoid disappointment.



## The Able Tasman

YOUR HOSTS

Dawn and Greg Makeham have 37 room available and the Able Tasman is located directly across the road from the West Dubbo Bowling Club. Venue for the 2008 ASAA AGM.

Booking enquiry please call Dawn on 02 6885 2555. To make a reservation dial 1800 209 992.



Pool Facilities for the family



Bowling Club opposite the Motel



The (Presidential) Room. Nice.

# Big 4 Caravan Park Dubbo.

Located right beside the Able Tasman and provides very good family accommodation.

**Address:** 154 Whylandra Street (Newell Highway), Dubbo 2830



**Latitude:** -32.24540910

**Longitude:** 148.5955543

**Phone:** 02 6884 8633

**Fax:** 02 6884 8341

**Freecall:** 1800 033 072

**Website:** [www.big4dubboparklands.com.au](http://www.big4dubboparklands.com.au)

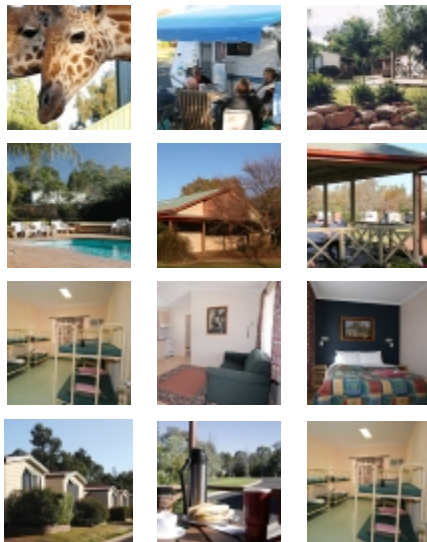
**Email:** [holiday@big4dubboparklands.com.au](mailto:holiday@big4dubboparklands.com.au)

**Host:** Allan and Deirdre Kernahan

**Location:** Near zoo, opp Dubbo Golf Course, 300m south of West Dubbo Bowling Club, the Post Office is 2.7km away.

**Accomm:** 7 new Macquarie Suites have just come on line which are fully self contained with a fully equipped kitchen. Split System Air Conditioning, and ceiling fans, LCD Flat screen TV with Austar and a DVD player. All our other cabins are air-conditioned, fully self-contained with large ensuites. Executive spa cabins, 1 and 2 bedroom Luxury (linen supplied), 3 bedroom Deluxe (linen required), 2, 5,6 & 1x 7 berth cabins, group lodge complex. Powered ensuite sites (min 2 nights), drive-through sites, campsites, extra long sites and motorhome friendly sites. Disabled bthrm, campers' kitchen, pool, free BBQs, walking trails, walk to bistro, club, zoo. ACHIEVEMENT: Winner Dubbo Environmental Award. CCIA Gumnut Award (Bronze).

**Achievements:** Winner Dubbo Environmental Award. CCIA Gumnut Award (Bronze).



# AUSSIE CABINS



The accommodation facilities within Aussie Cabins are fantastic. Located in a tranquil, bush setting just off the Mitchell Highway. The complex consists of 21 western red cedar style, standard and self-contained cabins. Each standard cabin contains 3 bunk beds (= 6 single beds), reverse cycle air conditioning, pillows and doonas, wooden flooring a colour bond roof with a rural outlook from each cabin window which adds to the ambience and charm of the overall complex making it ideal for families. The self-contained cabins are fully equipped with microwave, fridge, television, cutlery, crockery, kitchen, linen supplied and an en-suite bathroom.

There is also a well equipped kitchen, family BBQ'S in the courtyard area, clean and tidy amenities block with plenty of hot water and an in-ground solar heated salt water pool for guests to utilise at their own leisure.



**Cabin Manager** Raelene Dess ([aussie\\_cabins@hotmail.com](mailto:aussie_cabins@hotmail.com))

**Postal Address** PO Box 1751, Dubbo, NSW 2830.

**Street Address** 171 Sheraton Road

**City** Dubbo

**State** New South Wales

**Country** Australia

**Postcode** 2830

**Telephone** 02 6884 9504 (+61 2 6884 9504)

**Fax** 02 6884 4599 (+61 2 6884 4599)

**eMail** [aussiecabins@bigpond.com](mailto:aussiecabins@bigpond.com)

To find our exact location got to <http://www.aussieweb.com.au/map.aspx?id=1007129>

## For members attending with children



### Western Plains Zoo

Located close to Dubbo, the Western Plains Zoo is one of Australia's top tourist attractions. No cages to be found here. Animals roam free in a simulated native habitat with dry or water filled moats and low fences to enclose the animals. Allow yourself a full day to truly enjoy all there is to offer. Throughout the zoo you will find free barbecue and picnic areas, or you may prefer to take advantage of the catering facilities offered by the zoo's kiosks.

The Zoo is home to more than 1000 animals from all over the world many of which are endangered species. Set in 300 ha of bushland, the Zoo is also home to free-ranging native animals including kangaroos, emus and wallabies.

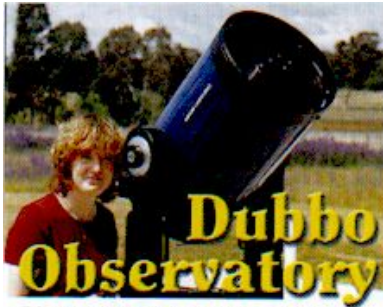
### Dubbo Sports World Stadium

It comprises of two air-conditioned indoor sports halls that can cater for a variety of functions, events and sporting activities. The stadium is situated next to Aussie Cabins complex, which provides ideal accommodation for sporting interest groups wanting to utilize the stadium.

### Dundullimal Homestead

Return to the 1800's and experience the self-sufficient isolation of pioneer life. The slab constructed homestead is now owned by the National Trust. Watch the saddler at work and visit the blacksmith's shop. Watch the entertaining performance of the farm animal show.





Discover a hugely magnified Moon, the Planets, the Milky Way and beyond with the most Hi-Tech telescopes in the west.

13L CAMP ROAD, DUBBO  
*First right after Zoo entry*

**Tel: (02) 6885 3022**  
*Bookings Essential*

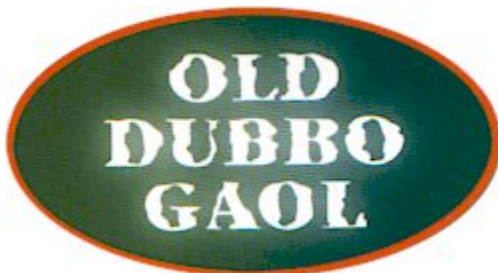
Email: EyeSky@bigpond.com.au

## The Observatory

After an introductory slide show, venture outside to see a 360 degree panoramic view of Dubbo's beautiful night sky. Learn about computerised telescope technology, scan the "Milky Way" and "drive" special telescope images around the moon. The observatory also offers extended audio-visual programs on those nights when the weather will not co-operate. Up to three powerful Schmidt Cassegrain telescopes are used together with large binoculars for panning around the star clusters in the Milky Way. Dubbo Observatories' special feature is a close-up view of the Moon not shown elsewhere. You can drive around the Moon, crater by crater!

## Dubbo City Tourist Park

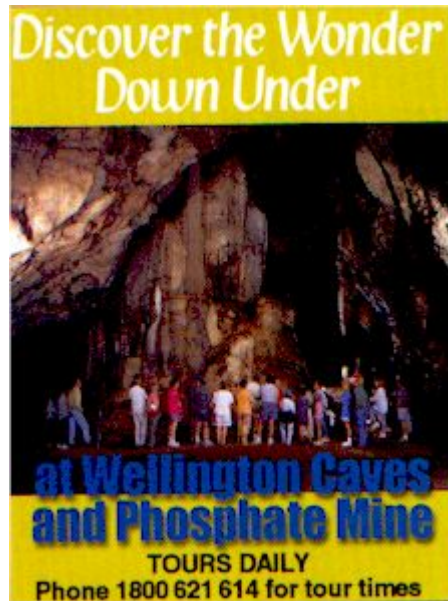
6 exciting family tourist attractions at the 1 place. One of the most unique museums in Australia. Conducted tours are available by appointment for coaches and schools day or night. This park includes the Dubbo Military Museum, Super maze, Science Expo and an Observatory. Coming soon, mini (putt putt) golf, golf target and driving range.



## Old Dubbo Gaol

Constructed in the **1870's** the Old Dubbo Gaol closed operations as a penal institution in 1966. Now fully restored, the Gaol was officially reopened as a Tourist Attraction in **1974**. The Gaol is now the home to NSW's largest display of 'World Class' animatronic models which provide a realistic and fascinating insight into prison life throughout the past century. Old Dubbo Gaol also boasts a large

collection of historical artifacts including one of only two complete hangman's kits in existence in Australia. The Gaol received a Heritage Week Award in 1987 and a Distinction Award in the 1992NSW Tourism Awards for Excellence.



## Wellington Caves

Wellington Caves provides visitors with the opportunity to go back millions of years in history. You can marvel at one of the world's largest stalagmites in the Cathedral Cave, be amazed by the limestone coral in the Garden Cave or don a hard hat and explore Wellington's latest attraction, The Phosphate Mine.

Whilst the caves have existed for millions of years, their modern history dates back to the 1820s when a traveling artist named Augustus Earle painted a picture of the Cathedral Cave. In 1830 George Rankin discovered many important fossils and returned later in the same year with Surveyor General Thomas Mitchell to collect specimens. Collections from Wellington Caves are now housed in many museums throughout the world.

The wheelchair friendly Phosphate Mines adds a whole new dimension to your caves experience. Opposite the caves you will find the Central West's latest tourist attraction, the Wellington-Osawano Japanese Gardens, where visitors can wander around the manicured gardens or sit and enjoy the tranquility of the reflection lake.